

How Great is the Impact?

A Bibliometric Analysis of XJTLU's Scholarly Publications

Liping Yang, Xin Jiang

September 4th, 2020

XJTLU | LIBRARY

XJTLU's Mission

XJTLU aspires to become a research-led international university in China and a Chinese university recognised internationally for its unique features in learning and teaching, research, social service, and education management.

The image shows a screenshot of the Xi'an Jiaotong Liverpool University (XJTLU) website. The main header features the university's name, location (No. 111 Ren'ai Road Suzhou Dushu Lake Higher Education Town Suzhou, China Mainland), and navigation buttons like 'Get in touch', 'View website', 'Watch video', 'Add to shortlist', 'Download Center', and 'Compare'. Below the header, there are three key statistics: 'QS Global World Ranking #801-1000', 'Status Private', and 'Research Output High'. An overlay window titled 'EXPLORE RANKINGS DATA FOR XI'AN JIAOTONG-LIVERPOOL UNIVERSITY' is displayed, showing a breakdown of rankings for the University of Wuppertal and Yasouj University. The breakdown includes a table of metrics and a circular gauge chart for the overall ranking.

EXPLORE RANKINGS DATA FOR XI'AN JIAOTONG-LIVERPOOL UNIVERSITY

← (Rank: 601-800) **University of Wuppertal** **Yasouj University** (Rank: 601-800) →

BREAKDOWN OF RANKING:

World University Rankings

2021 Rank: 601-800

[View full ranking table](#)

Overall	-
Teaching	16.7
Research	15.0
Citations	66.4
Industry Income	36.0
International Outlook	76.5

SELECT FROM ONE OF THE BELOW RANKINGS:

World University Rankings
2021 Rank: 601-800

OVERALL
-
25
50
75
100

The Ask: What the Library can do for its mission?

Research & University Rankings

Teaching is one key pillar of an institution's mission. Another is research output.



- Academic reputation (40%)
- Employer reputation (10%)
- Faculty/student ratio (20%)
- Citations per faculty (20%)
- International faculty ratio (5%)
- International student ratio (5%)

- Teaching (30%)
- Research (30%)
- Citations (30%)
- International outlook (7.5%)
- Industry income (2.5%)

- The number of alumni and staff winning Nobel Prizes
- the number of articles published in journals of *Nature* and *Science*
- the number of Highly Cited Researchers and articles indexed in SCIE and SSCI and per capita performance

The Response

基于文献计量分析的中外合作大学学术产出研究

杨丽萍 蒋欣 毕新

摘要 论文采用文献计量的方法,综合分析目前三所中外合作大学——西交利物浦大学、宁波诺丁汉大学、北京师范大学香港浸会大学联合国际学院2006至2013年学术文献产出的各项指标;并选取苏州大学及南京大学的论文产出作为参考,比较全面地呈现目前中外合作大学科研发展态势及科研概况。

关键词 中外合作大学 文献计量 科研概况

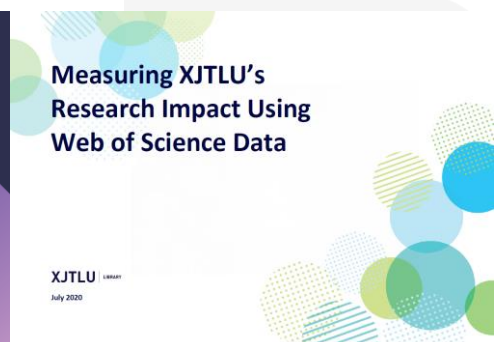
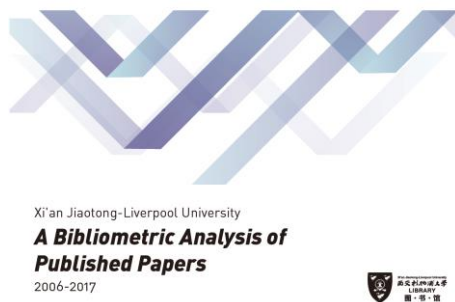
分类号 G252.8

Bibliometric Analysis of the Academic Output of Sino-Foreign Joint Venture Universities

Yang Liping, Jiang Xin, Bi Xin

Abstract Adopting the method of bibliometric analysis, this paper comprehensively examines the profile of three Sino-Foreign joint venture universities (namely, Xi'an Jiaotong-Liverpool University, University of Nottingham Ningbo, China and United International College) from 2006 to 2013 in terms of publication output. The assessments of the publication output of Nanjing University and Soochow University were provided as reference. It comprehensively presents the sino-foreign university's scientific research development trend and the research situation.

Keywords Sino-foreign joint venture university. Bibliometric. Research profile.



Bibliometric Analysis & Research Metrics

Bibliometric analysis is a major method to evaluate research:

- ✓ It uses quantitative data to measure impact, so is seen as objective.
- ✓ There are now tools to produce the data and the procedure is transparent.
- ✓ Bibliometrics can be looked at on different levels (individual, institutional, national or international).
- ? Metrics measures impact but not necessarily quality.
- ? Metrics can be manipulated sometimes.
- ? There are factors that may affect the value of the metrics discussed in this paper, including discipline, size of an entity, database coverage, time, etc.

Data Sources

The following indexes in the *Web of Science Core Collection* –

- Science Citation Index Expanded (SCIE)
- Social Science Citation Index (SSCI)
- Arts & Humanities Citation Index (AHCI)
- Conference Proceedings Citation Index – Science (CPCI-S)
- Conference Proceedings Citation Index – Social Science & Humanities (CPCI – SSH)
- Book Citation Index – Science (BKCI-S)
- Book Citation Index – Social Sciences & Humanities (BKCI-SSH)
- Emerging Sources Citation Index (ESCI)

Data collected date: [June 10 , 2020](#)

Tools

InCites – a citation-based research evaluation tool based on *Web of Science*

Essential Science Indicators (ESI) – an analytical tool that helps identify top-performing research in *WoS Core Collection (SCIE & SSCI)*

Indicators used: journal indicators (JIF, journal quartiles), impact indicators (CNCI, times cited, citation impact, h-index), percentile and percentage indicators (% Docs in Top 1%/Top 10%), collaboration indicators and ESI indicators (highly cited papers, ESI most cited)

Citespace – a software for visualising patterns and trends in scientific literature

Tableau – a software for analysis and visualisation

What We Look at

Output, Authorship and Impact

Research Areas

Research Collaboration

Source Titles of Publications

ESI Rankings and Performance

Go to Online Demonstration
Tableau

Conclusions & Implications

The bibliometric analysis has provided objective data on XJTLU's research paper output and performance, which might help to lay a solid foundation for XJTLU's making of a better research strategy and comprehensive development of all disciplines in future.

What the Library could do:

- Expand and deepen our research support and knowledge services
- Create more opportunities for postgraduates to learn about the research and scholarly communication processes
- Play a role in the University's research performance evaluation process
- Initiate the making of the guidelines on institutional affiliation in research publications
- Promote our institutional repository to help our researchers increase their research impact

Project Team Members

Jiang, Xin

Ping, Heng

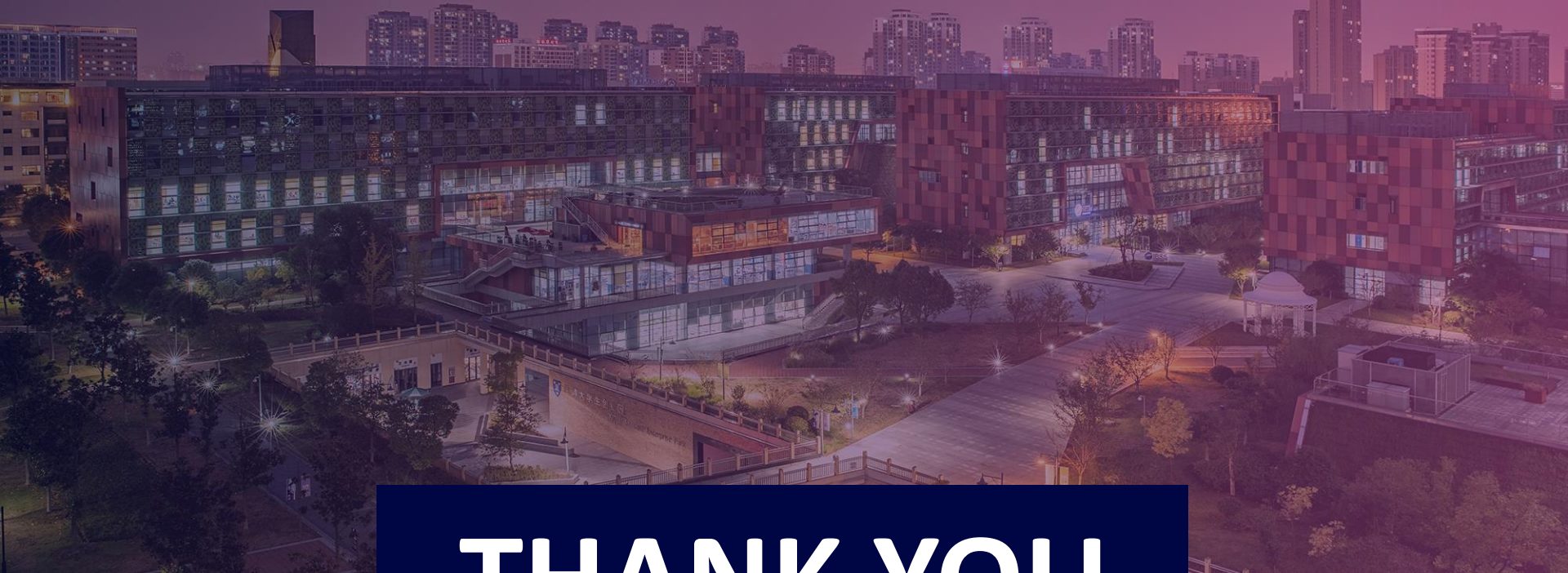
Wei, Xiaoying

Pan, Yingying

Wang, Jun

Yang, Liping





THANK YOU

VISIT OUR SITE

<https://lib.xjtlu.edu.cn/>

WECHAT

